

Recruitment Services

A Family For Every Child

"Children are our most valuable resource"

-Herbert Hoover



Check It Out!

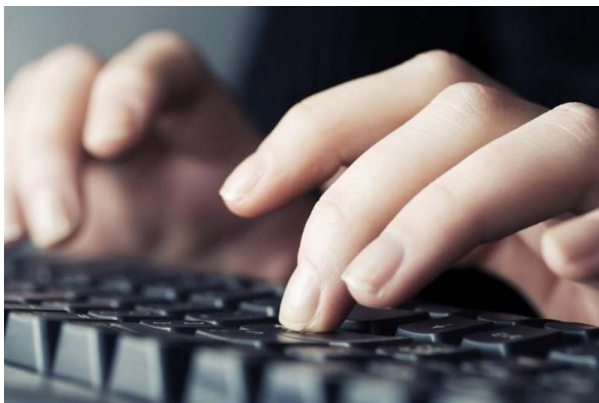
**Our Interactive Follow Up Email
allows you to manage your listings
with just the click of a button!**

**Learn more about how this feature will save you time and keep
your children's information updated.**

HOW IT WORKS

♥ For Current Children ♥

Completely interactive, we provide you with a name, photo, case number (or, in some cases, a website tracking number), the families who have submitted a home study, as well as the button options to update the status of a child or sibling group on your case load.



♥ Convenience ♥

The Interactive Follow Up Email allows you to view all of your child listings in one easy format.

♥ Selection ♥

You can select the day of the month you want to receive the email.



We also include other children on your case for whom we have received either an update in the last 30 days for, or are children with an "On Hold" status. We also appreciate any additional information you may wish to disclose about a child's case or status.

Picture	Names	Your Case Number	PLEASE SELECT ONE!					
	Kanga P	KANGAP	No Change	Update	Placed	On Hold	Inactive	More...
	Kanga Z, Kanga Y, Kanga X, Kanga W, Kanga V, Kanga U, Kanga T and Kanga S	HI100	No Change	Update	Placed	On Hold	Inactive	More...
	Kanga J and Kanga K	WA98	No Change	Update	Placed	On Hold	Inactive	More...

Our streamlined process makes things concise and user-friendly! Each of our buttons has a specific function.


No Change	Update	On Hold	Placed	Inactive	More..
Keep the listing as is.	Update the child's page.	Update the child's status to "On Hold."	Update the child's status to "Placed."	Update the child's status to 'Inactive'.	Request recruitment services such as a Child Matching Event.


Our system allows a selection of options for various needs to allow for you to manage your listings and recruitment services with ease.

You may also be interested in our equally convenient Matching Assistance Program for Professionals. To learn more about MAPP, please visit our website [here](#).


To request a Targeted Search of our database to look for


potential matches for children on your case load,
simply complete our convenient request form [here](#).

Family Matching Event
For social workers nation wide to find potential families that are the best fit for all of your children!
Hosted By: 



**Upcoming
Family Matching Events
Featuring Waiting Families**
August 31
September 27
October 25
November 15
December 14

Child Matching Event
For families nation wide to connect with social workers and find the children to best fit the family!
Hosted By: 



**Upcoming
Child Matching Events
Featuring Waiting Children**
September 13
October 5
October 17
November 8
November 29
December 20

To request information on our popular
Online Matching Event Webinars,
or to schedule a child on your case load for a
Child Matching Event Webinar,
call 541-343-2856 or
email
recruitment@afamilyforeverychild.org

We Appreciate Your Opinions!

Here at A Family For Every Child, we are continuously looking for ways to enhance the experience for social workers. Tell us what you like, what you don't, and ways you think we can approve. We are here to help!


Please expression your questions, comments, or concerns to:
[Kelli Smith, Recruitment.](#)



A Family For Every Child

*For more information on our
many programs and services,
please visit our website at:*

www.afamilyforeverychild.org



A Family For Every Child
1675 W 11th Avenue,
Eugene, OR 97402